

# **Prípad SD-IAP 774**

*Referuje: MUDr. Slávik Pavol*

*ÚPA JLF UK a UNM Martin*

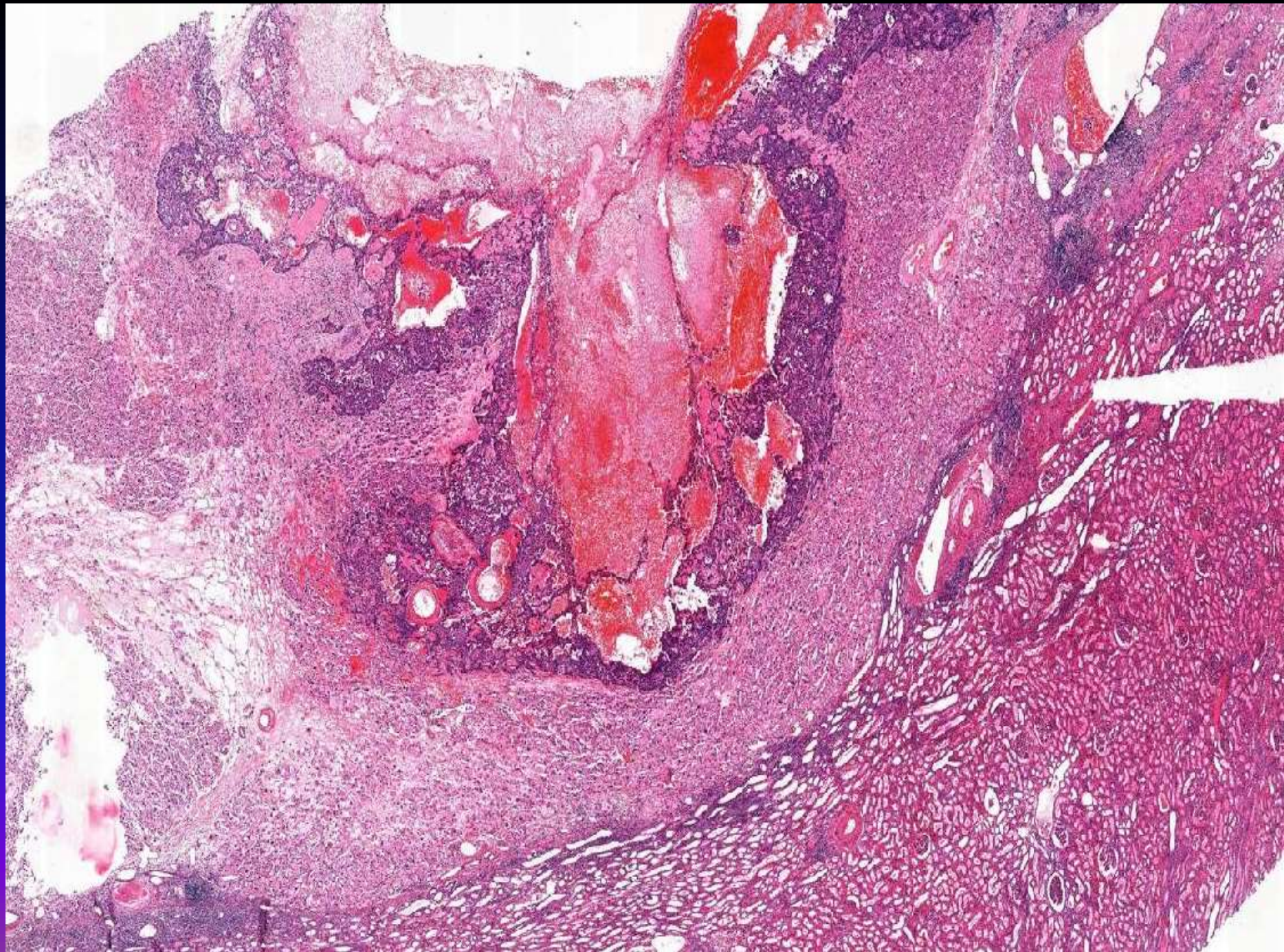
Martinský bioptický seminár, november 2021

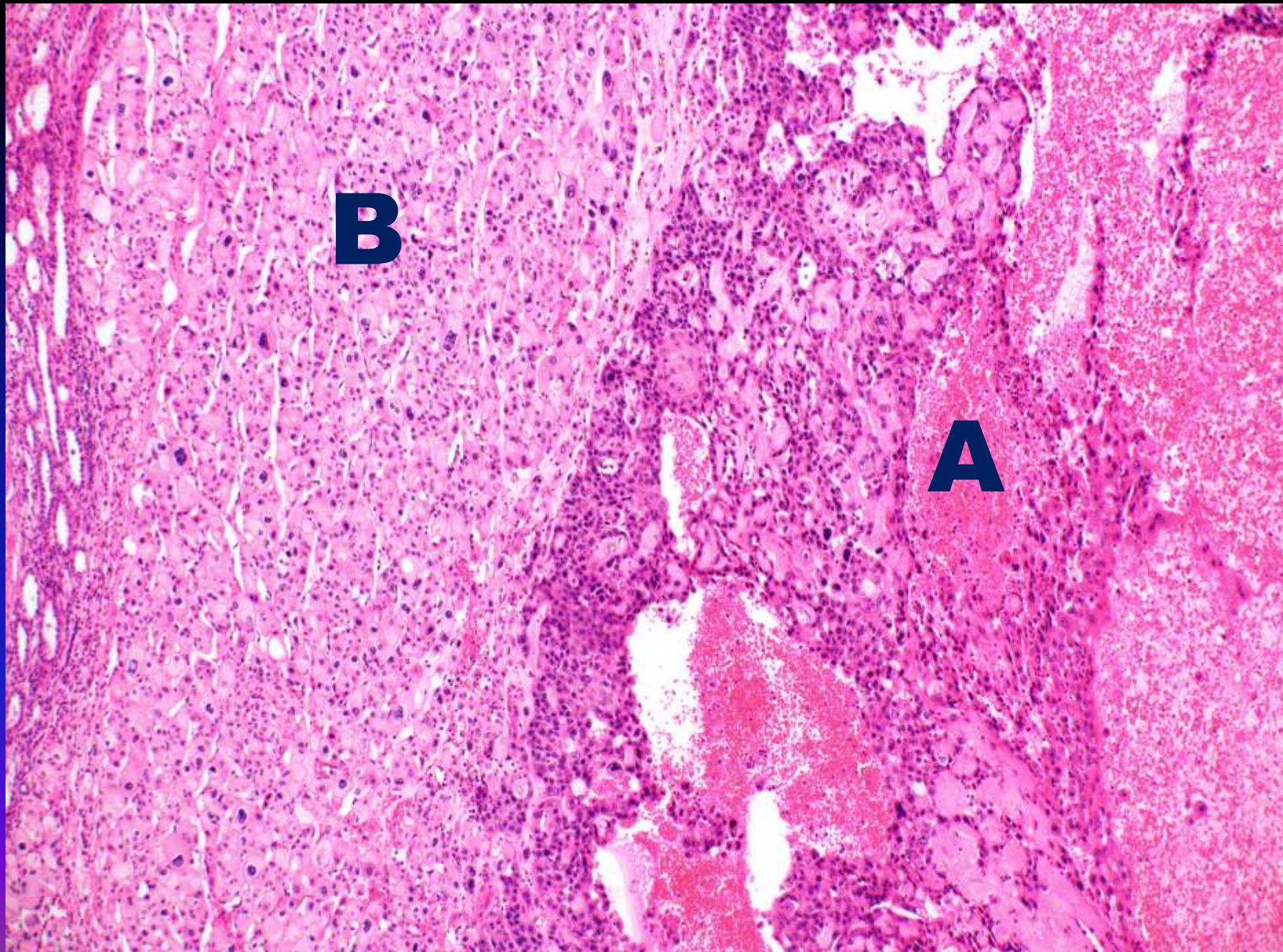
# Klinické údaje

- Žena, 56 rokov, hospitalizovaná pre tumorózny proces ľavej obličky
- Makroskopicky : oblička dĺžky 10 cm s tumorom v oblasti jedného pólu veľkosti 8 x 7 x 6 cm.
- Nádor cystického vzhľadu v okrajových častiach tuhšieho až chrupavčitého charakteru krémovej farby.

## **Klinická dg.:**

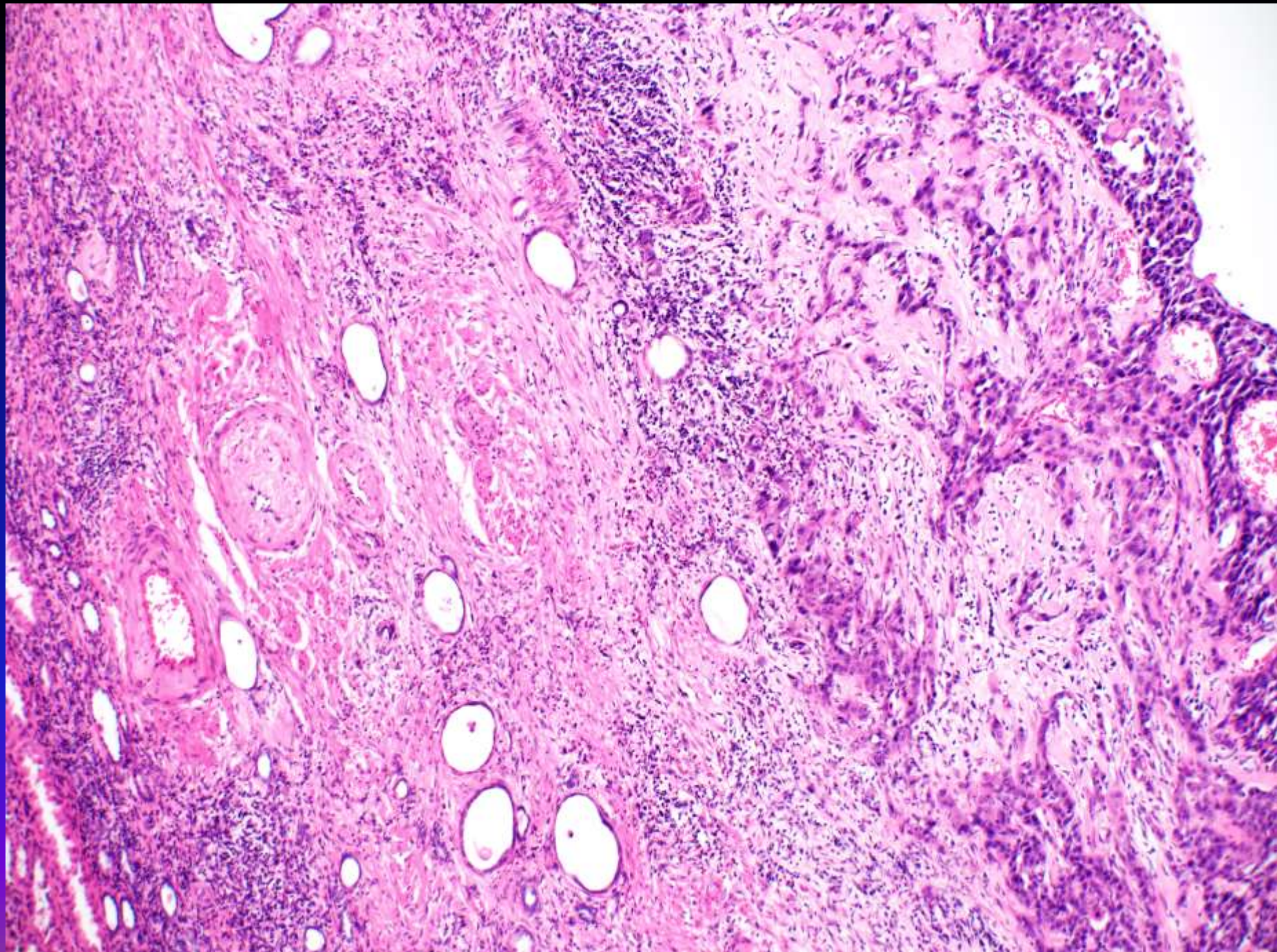
- Tumor obličky vľavo

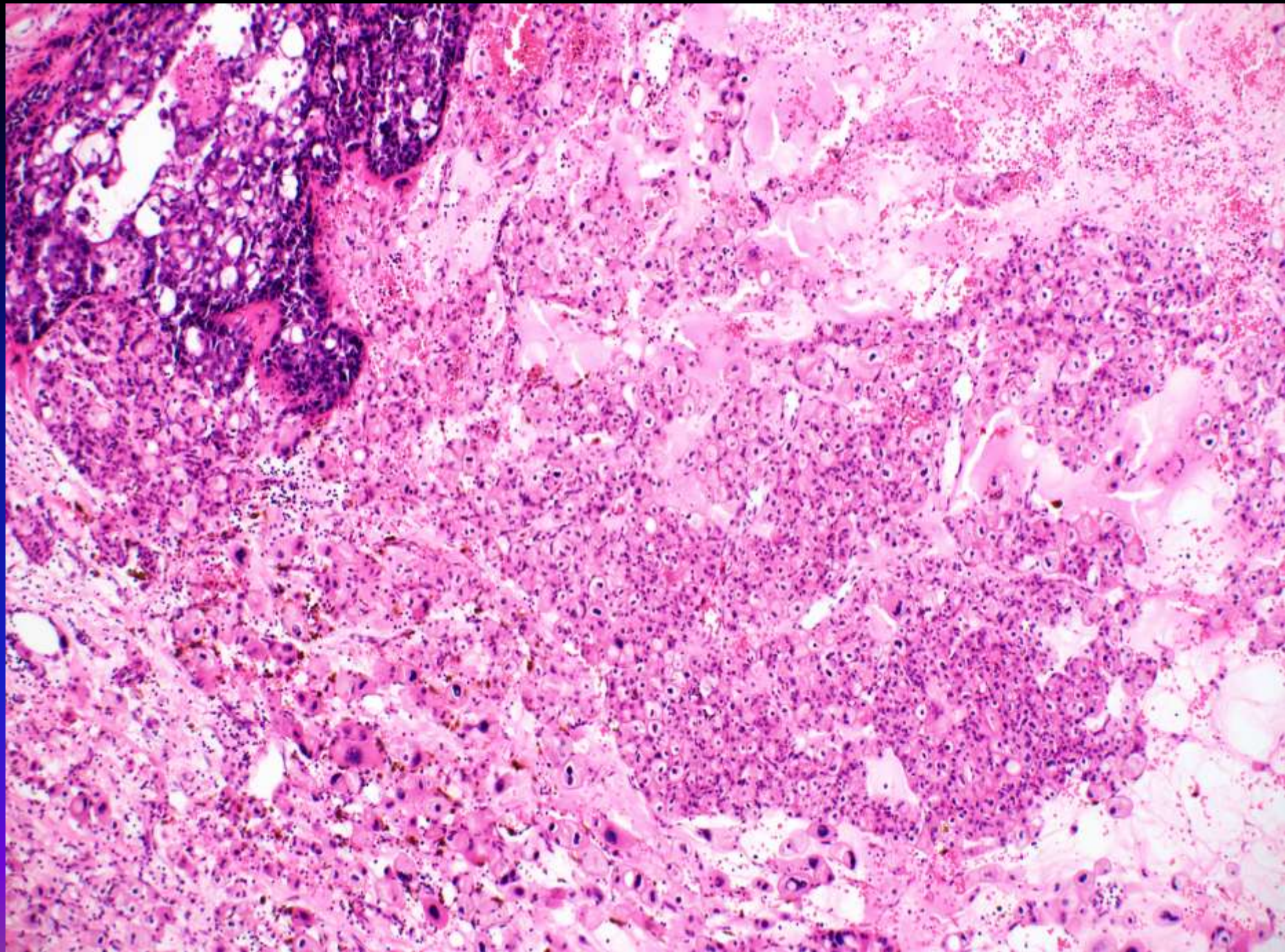




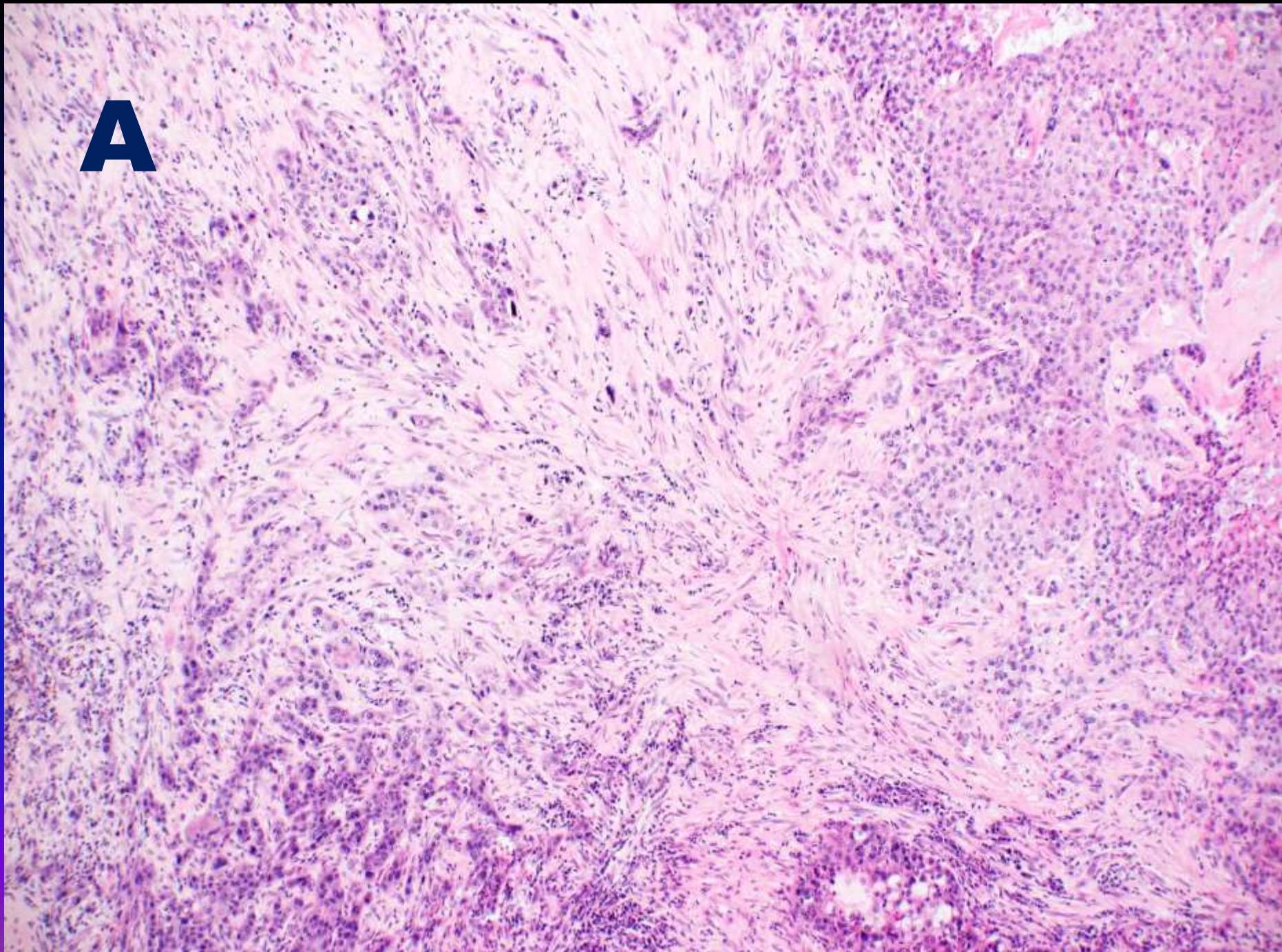
**B**

**A**

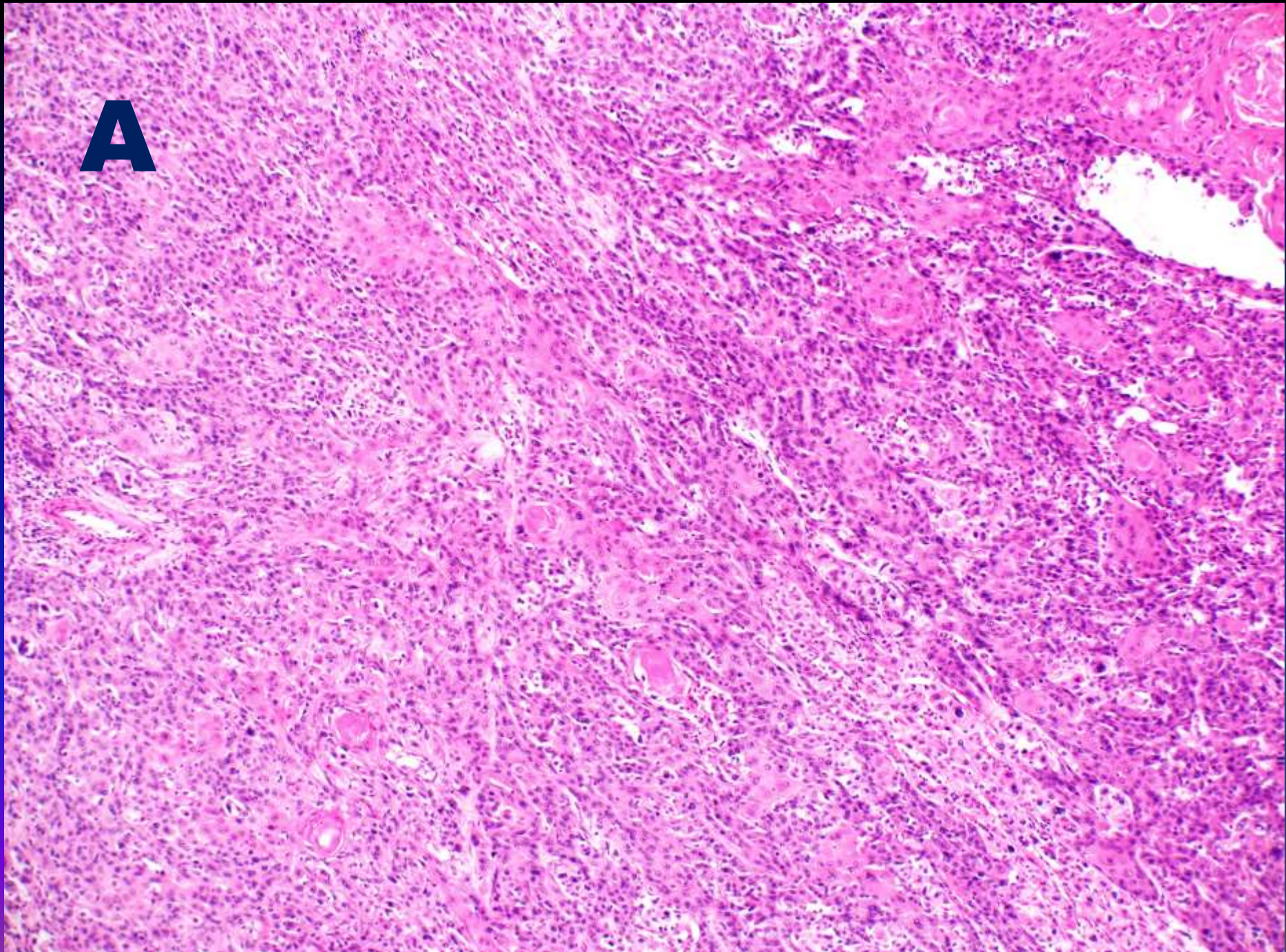




**A**

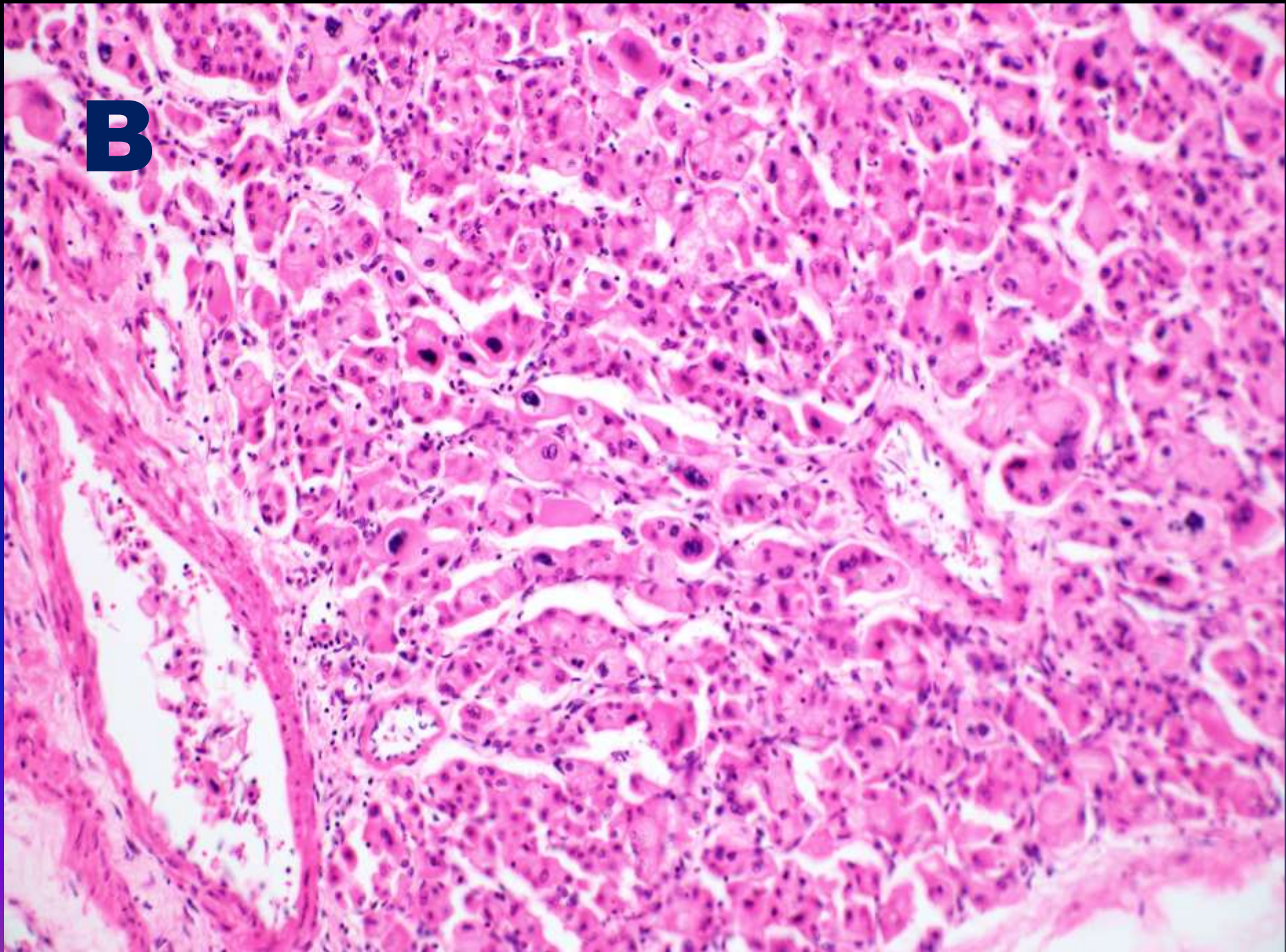


**A**

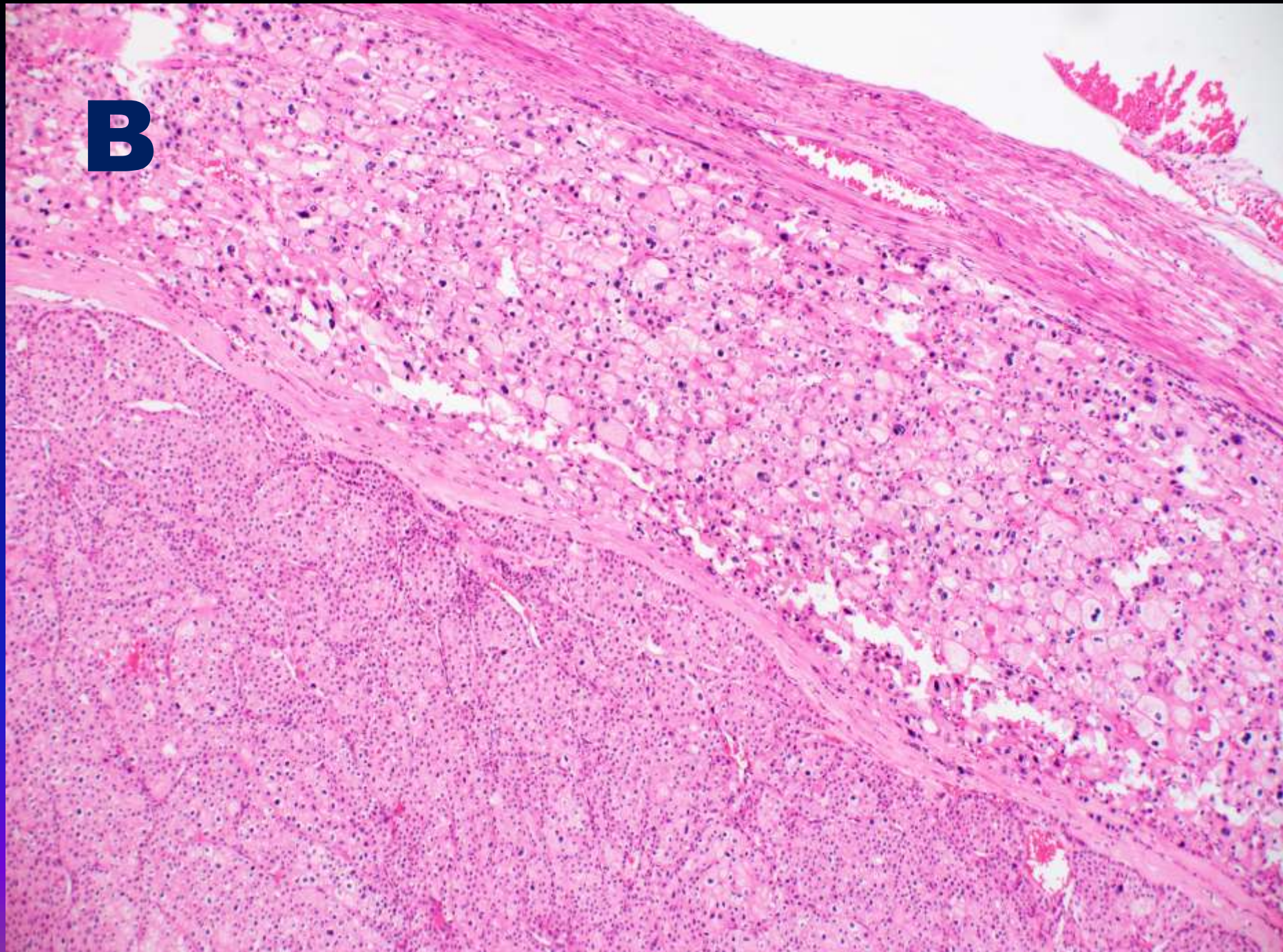




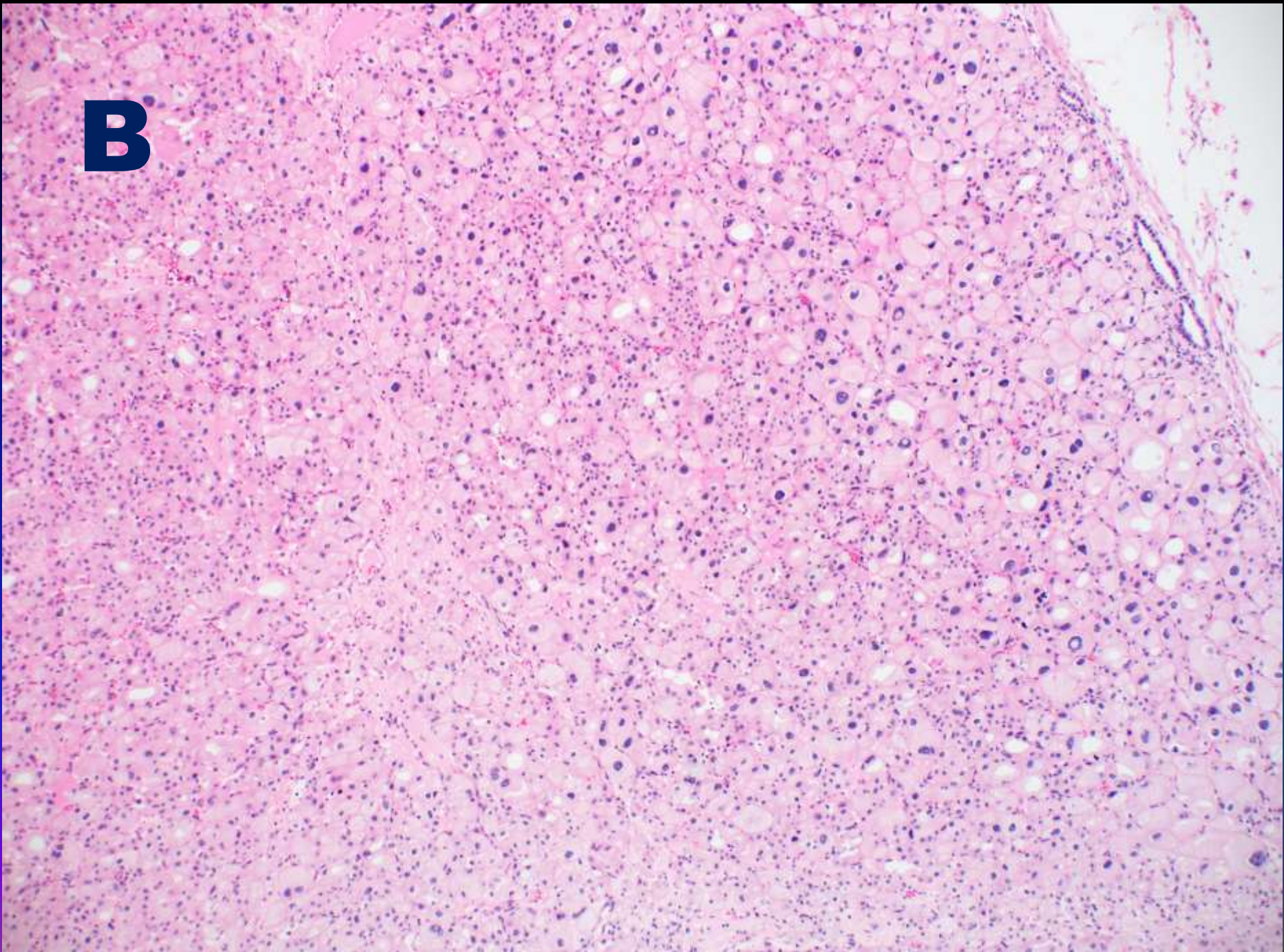
**B**



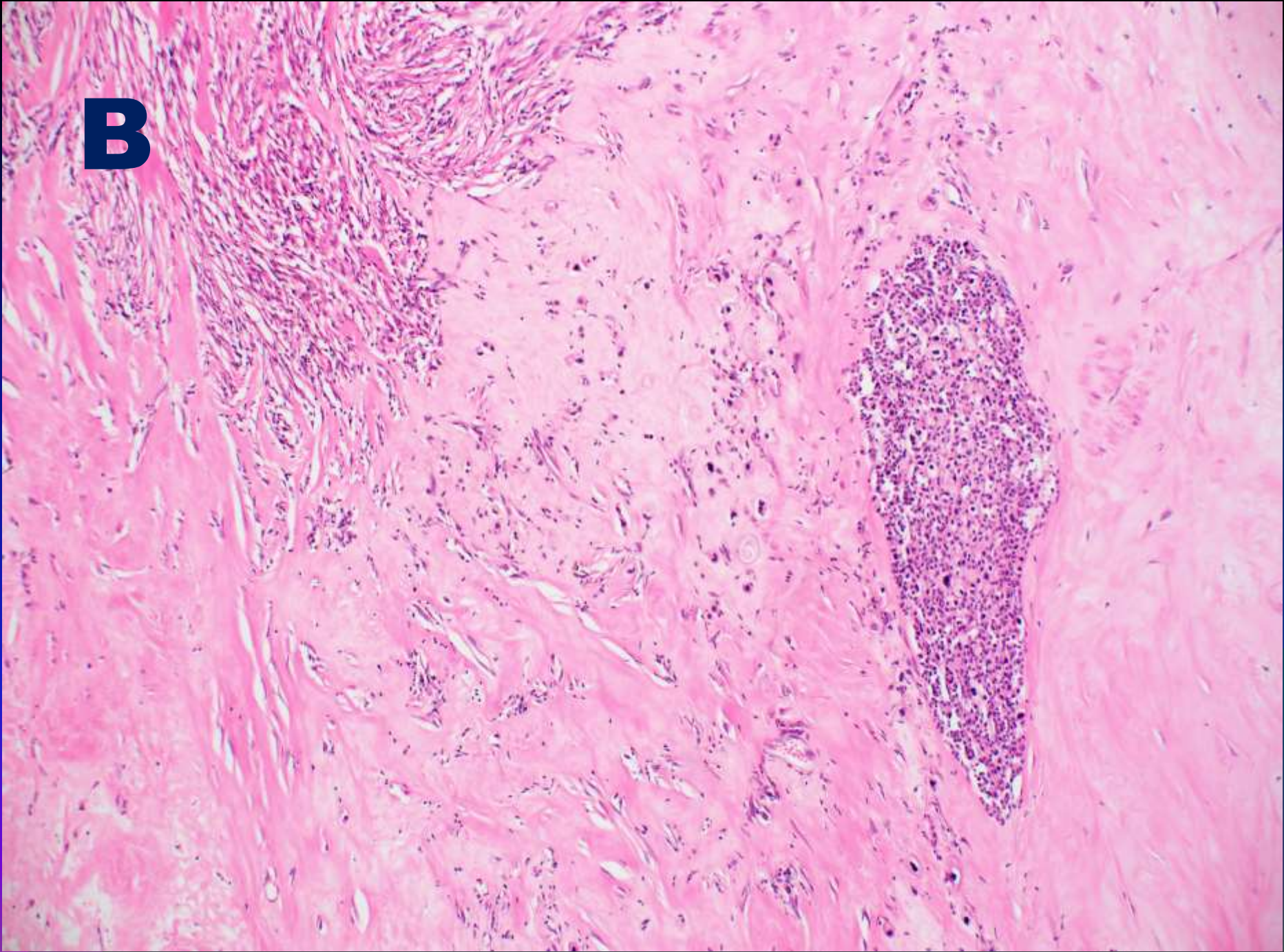
**B**



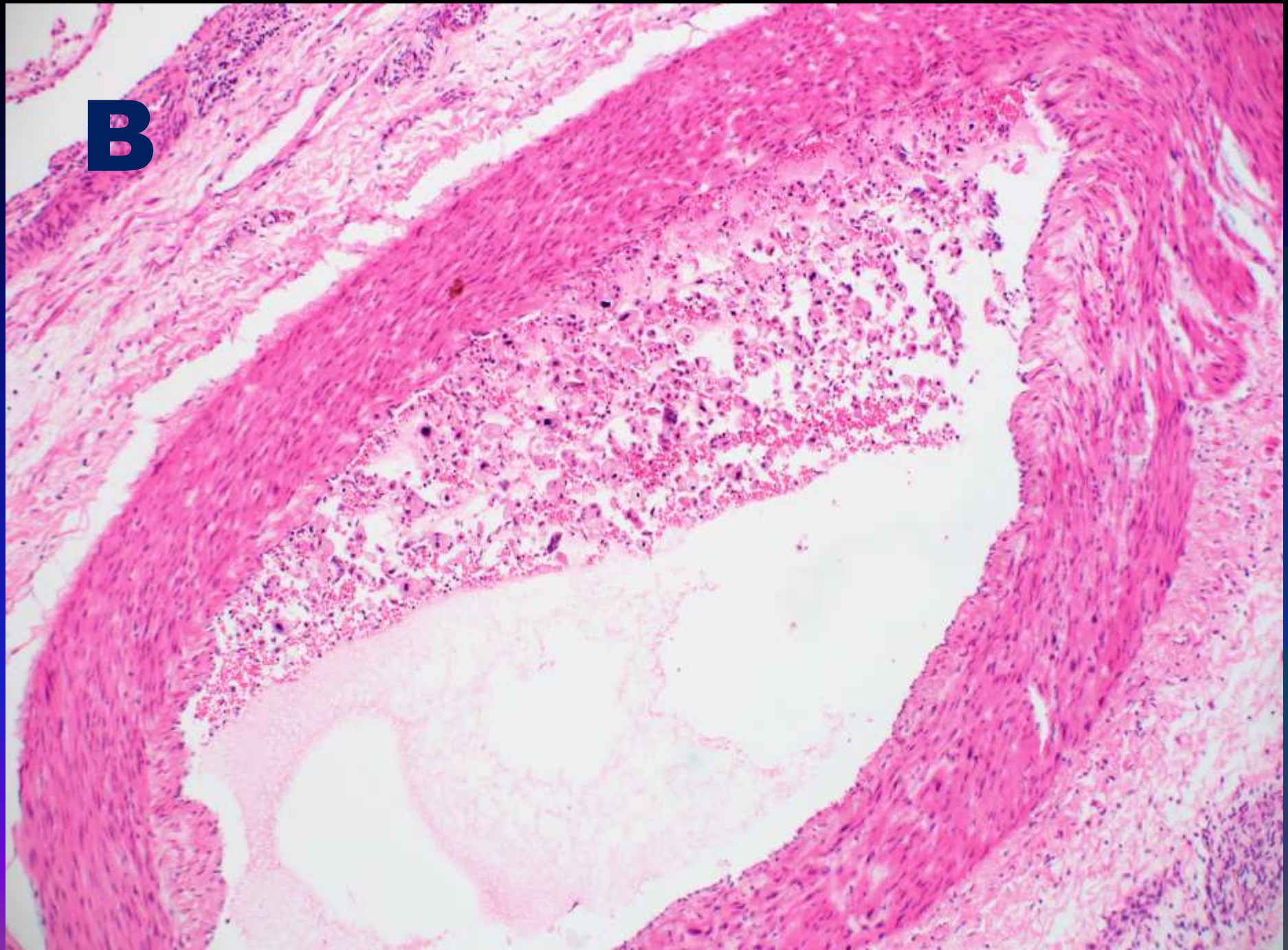
**B**



**B**



**B**

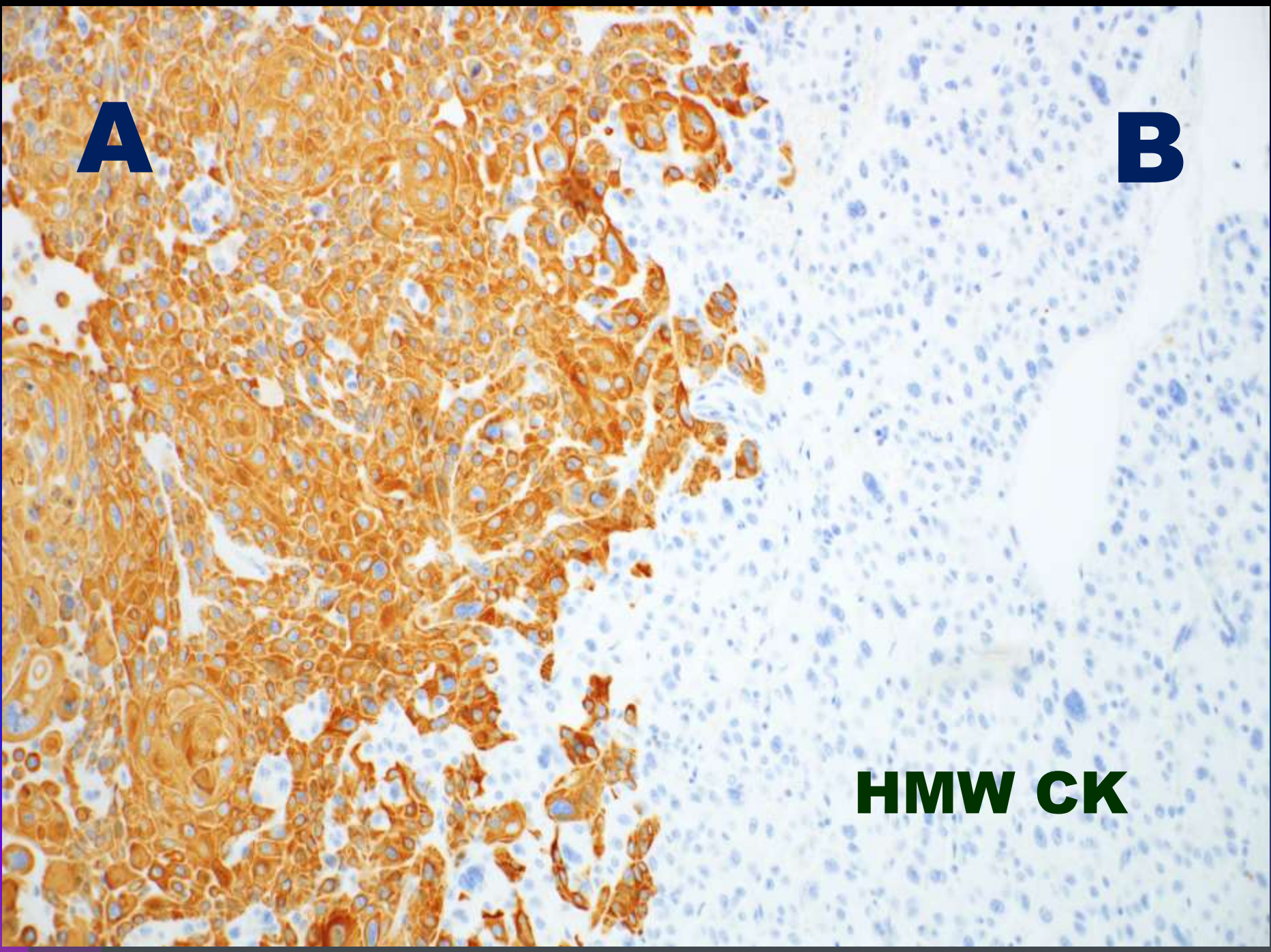




**A**

**B**

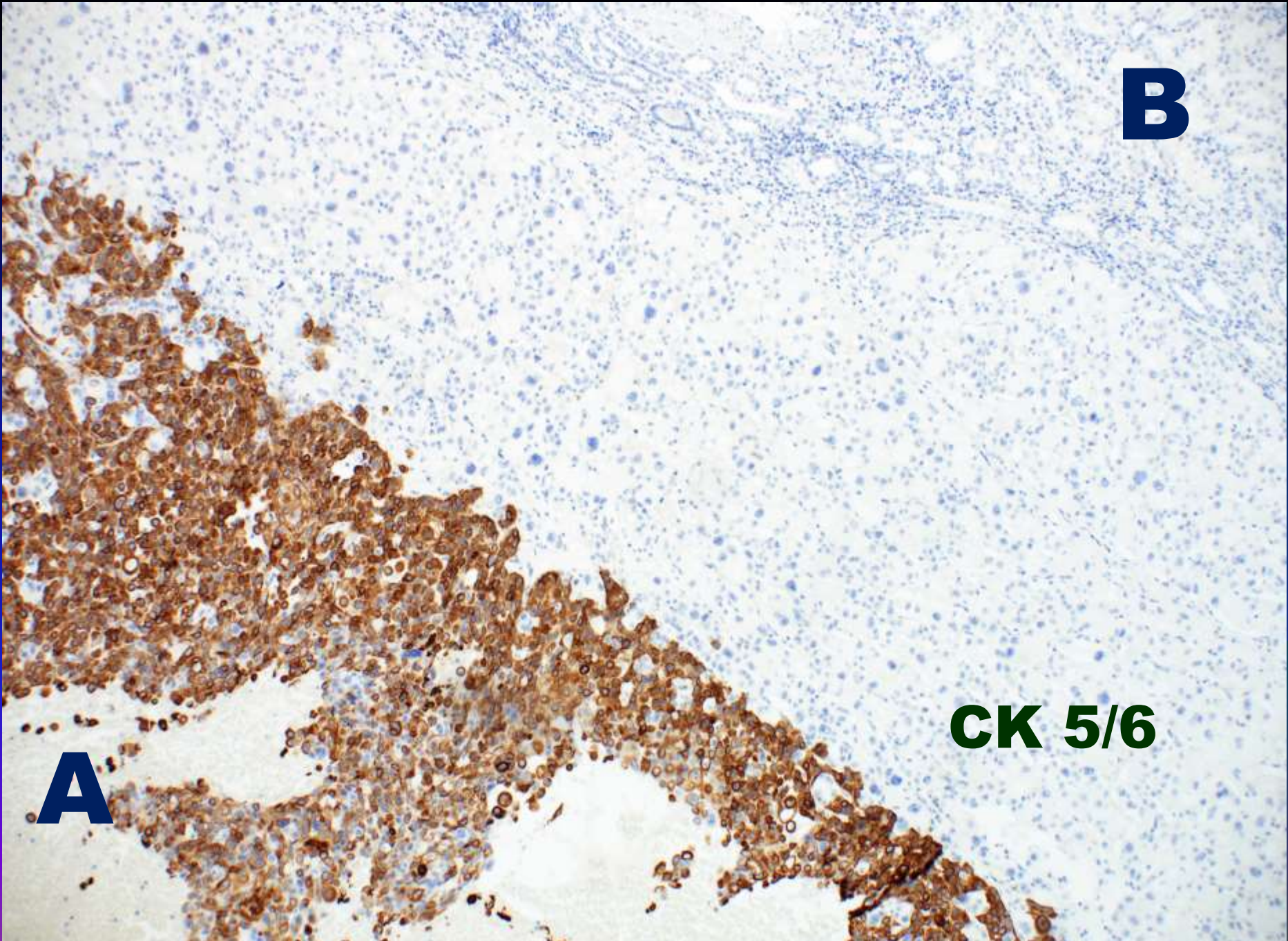
**HMW CK**



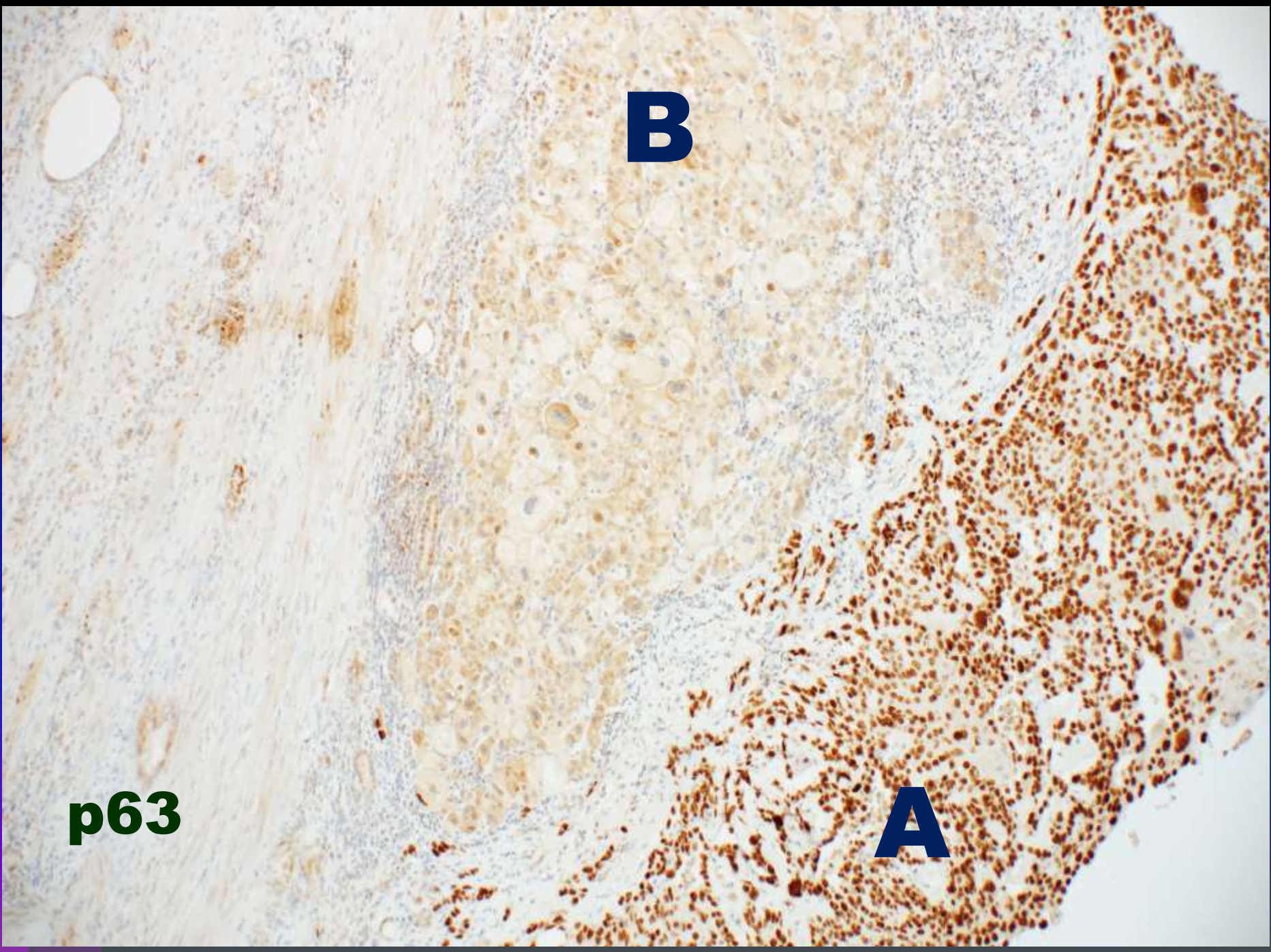
**B**

**A**

**CK 5/6**







**p63**

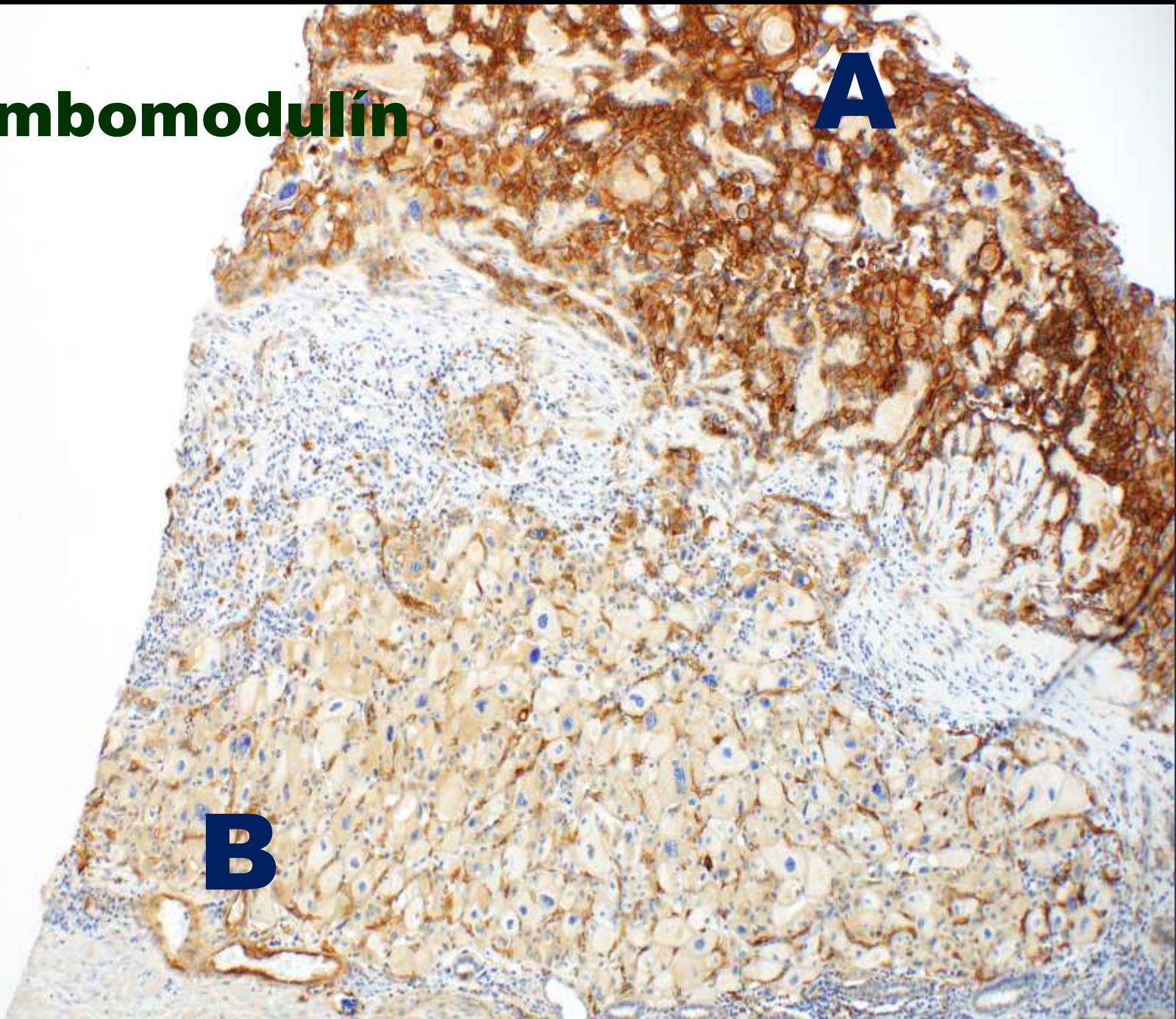
**B**

**A**

# Thrombomodulin

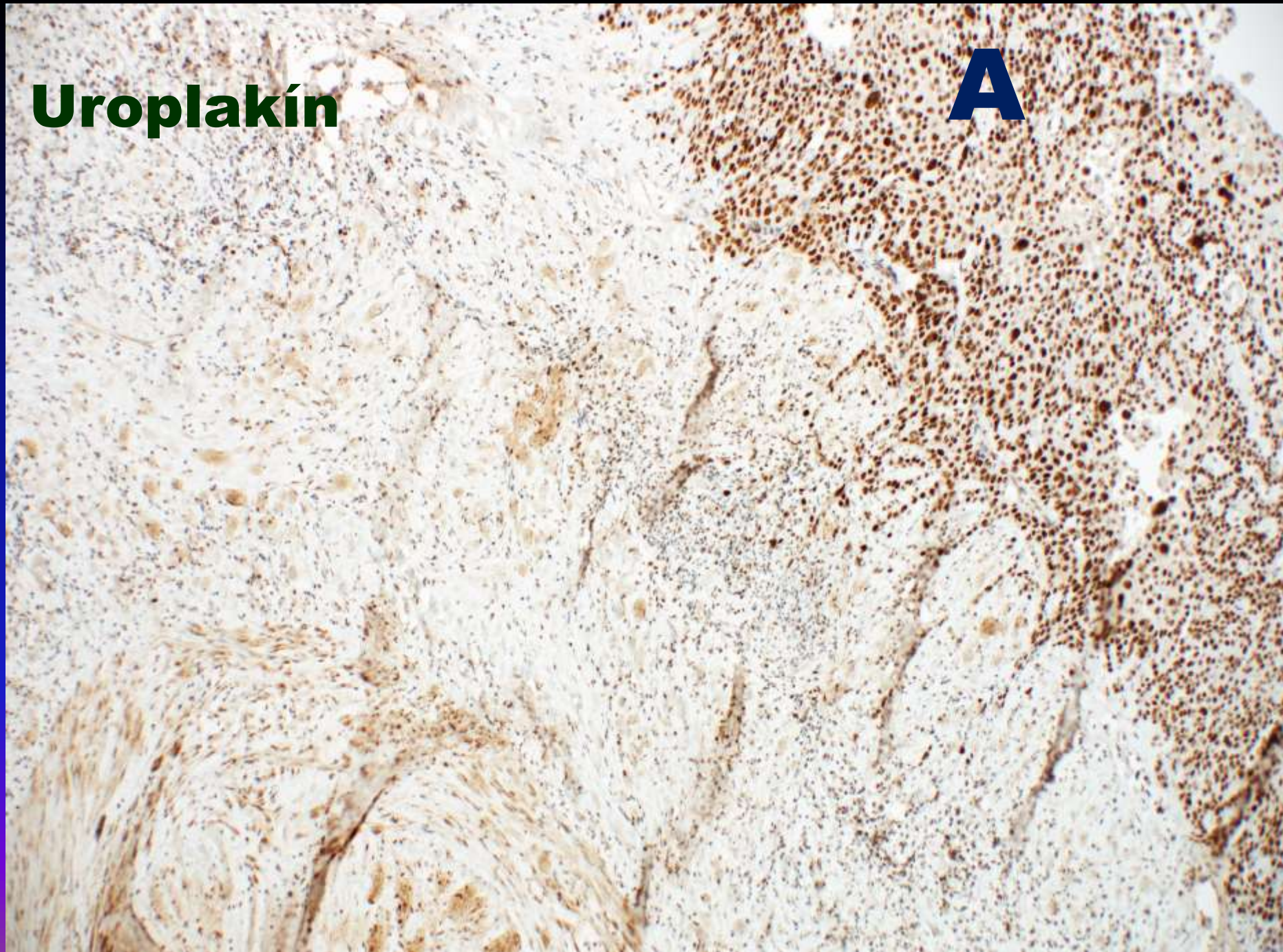
**A**

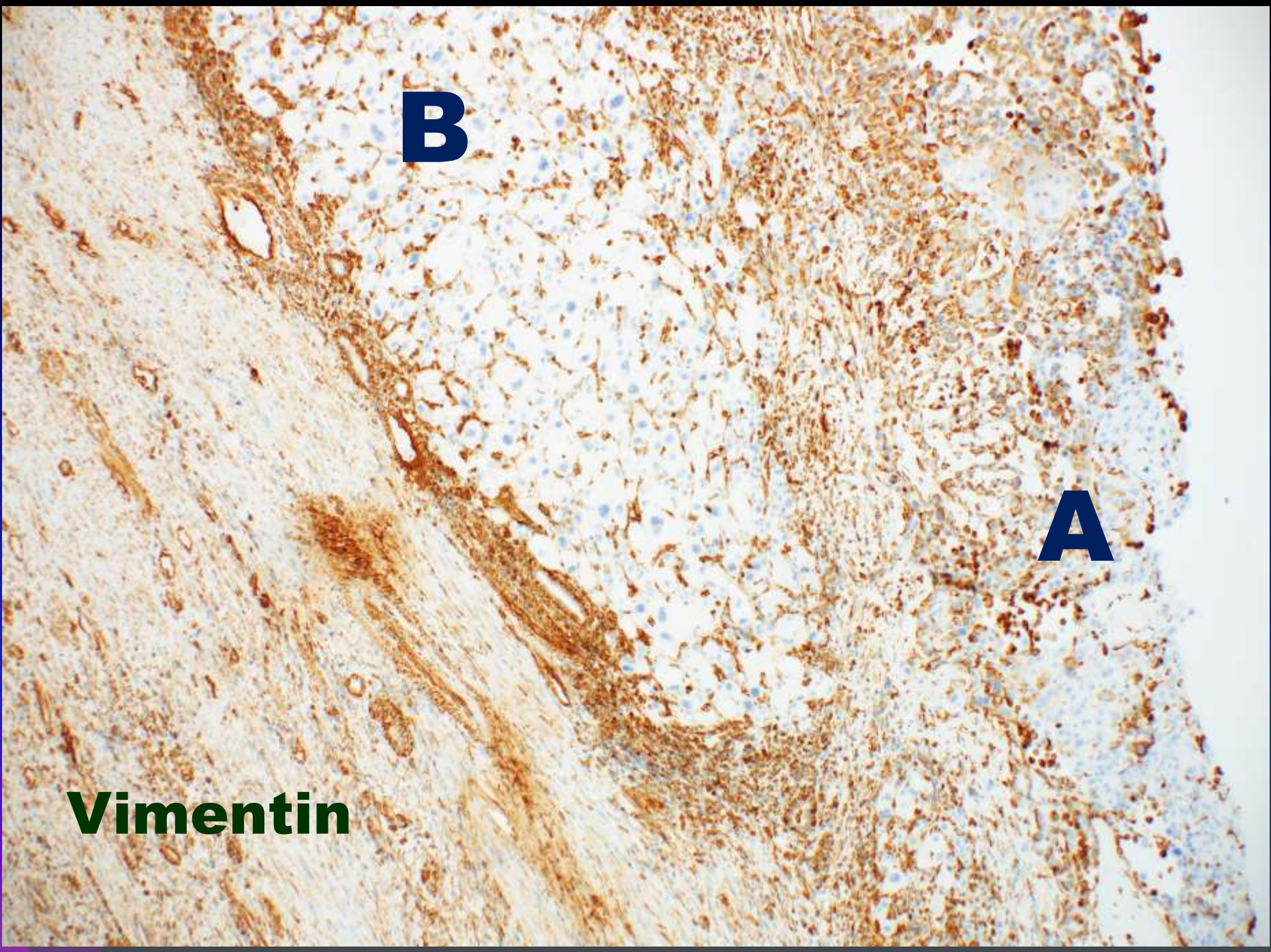
**B**



**Uroplakín**

**A**

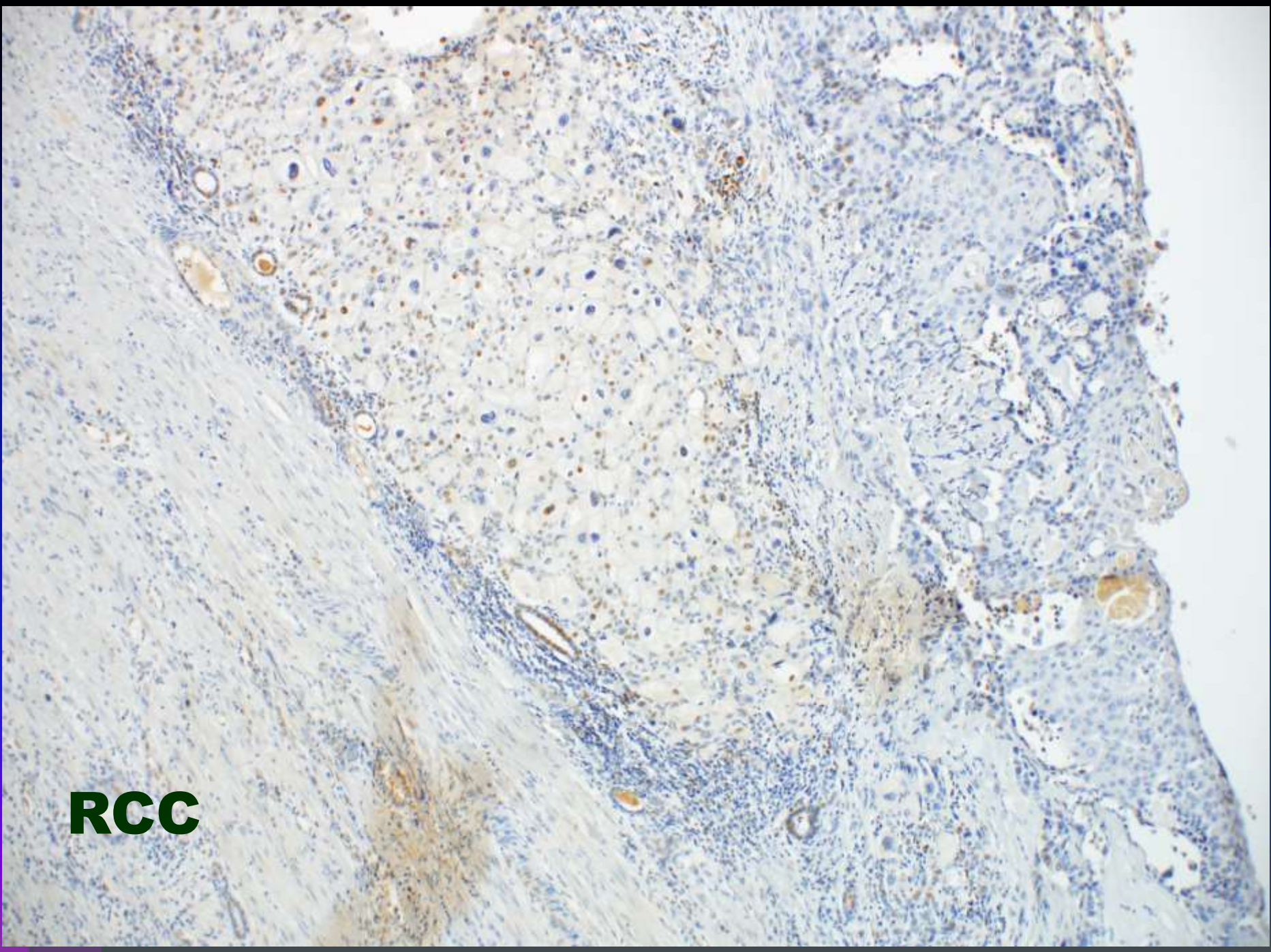




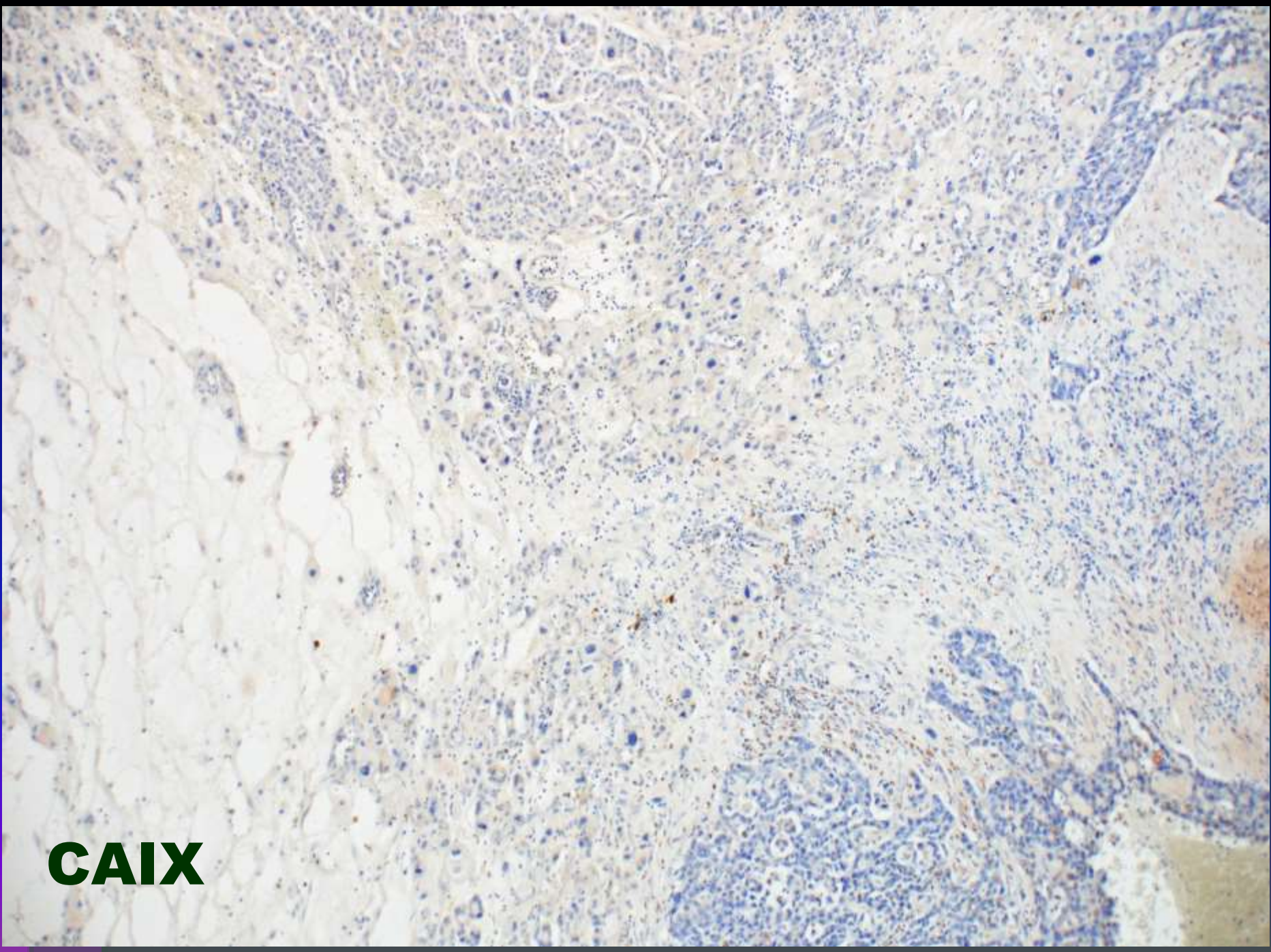
**B**

**A**

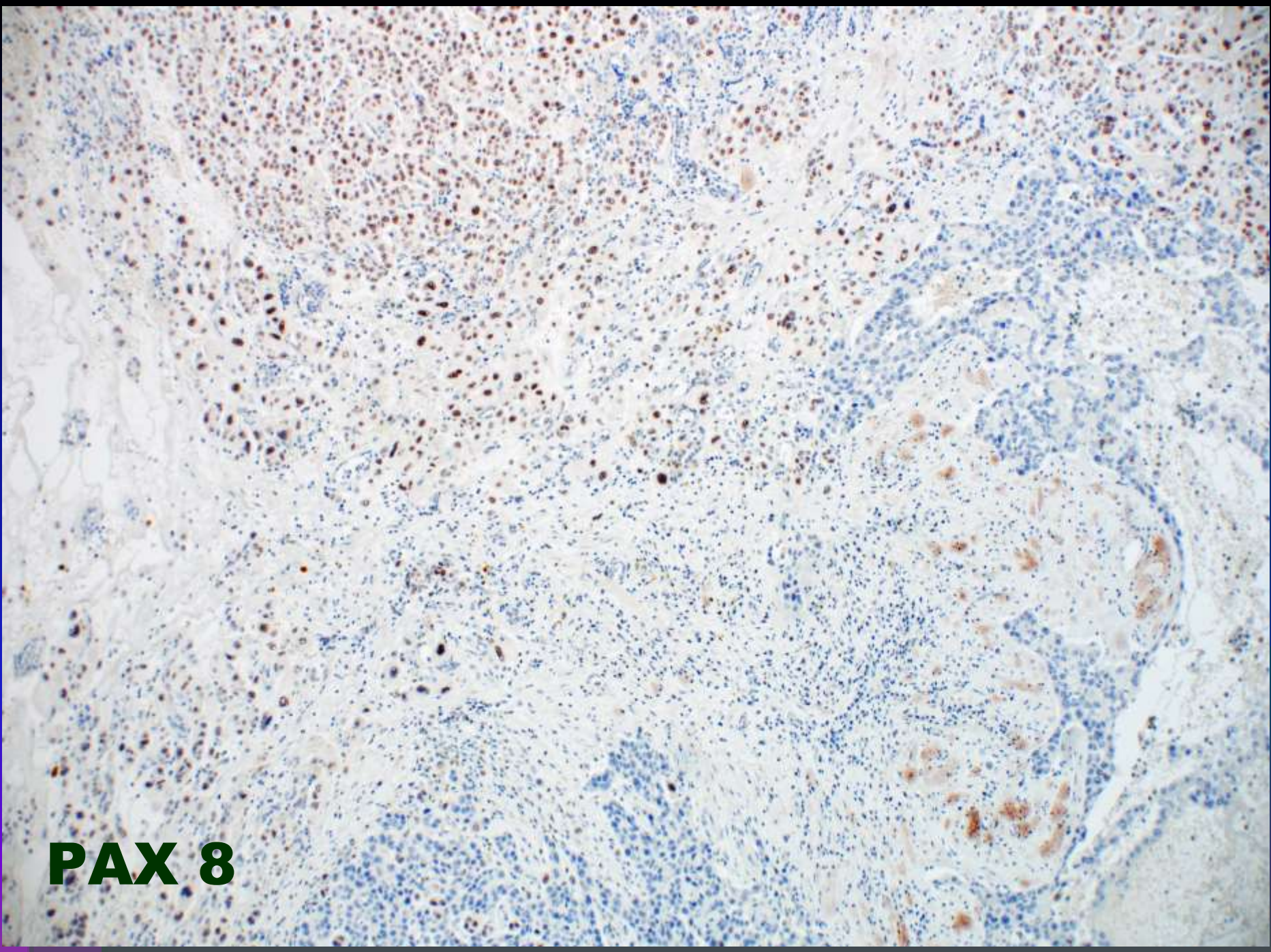
**Vimentin**



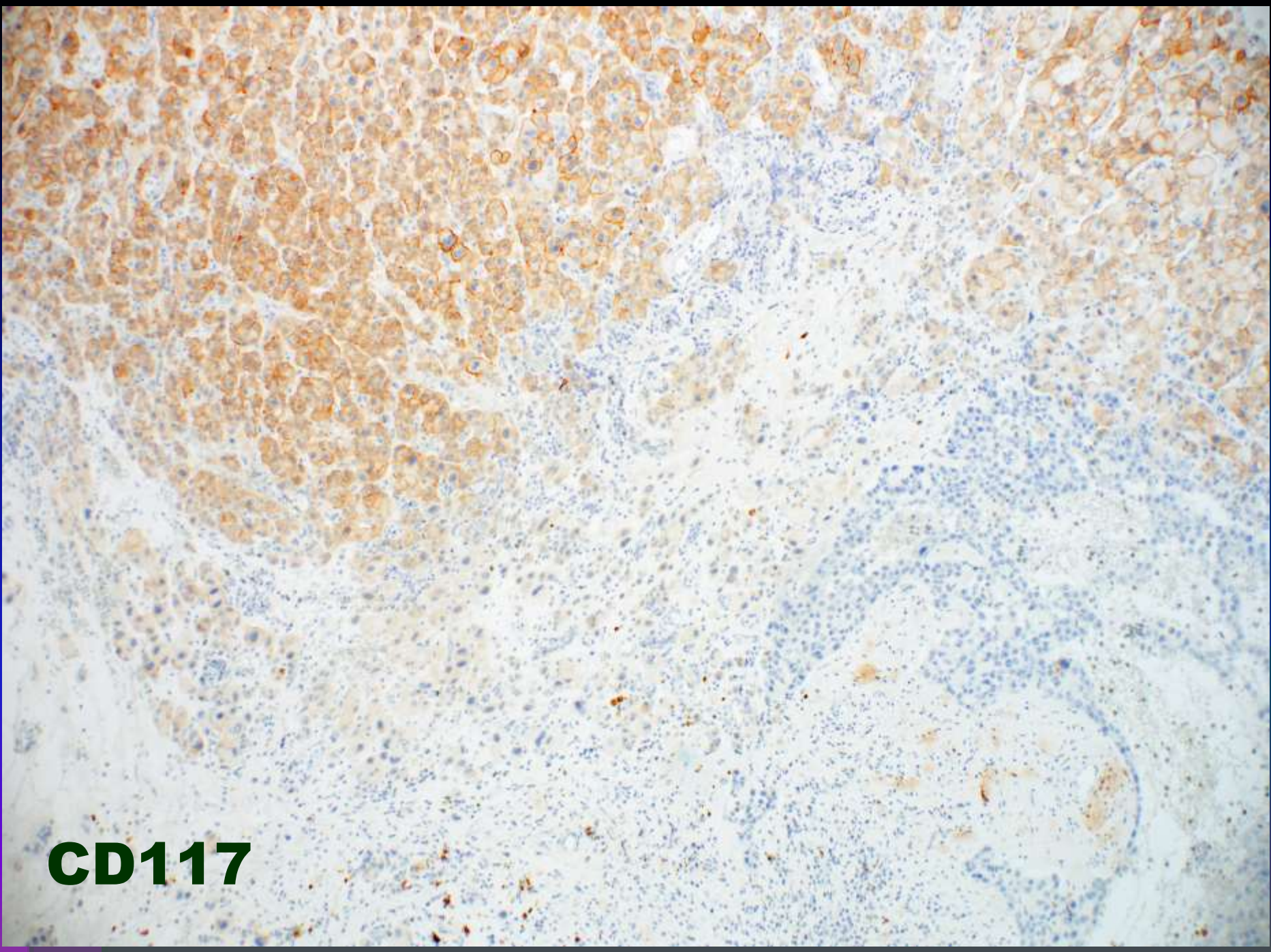
**RCC**



**CAIX**



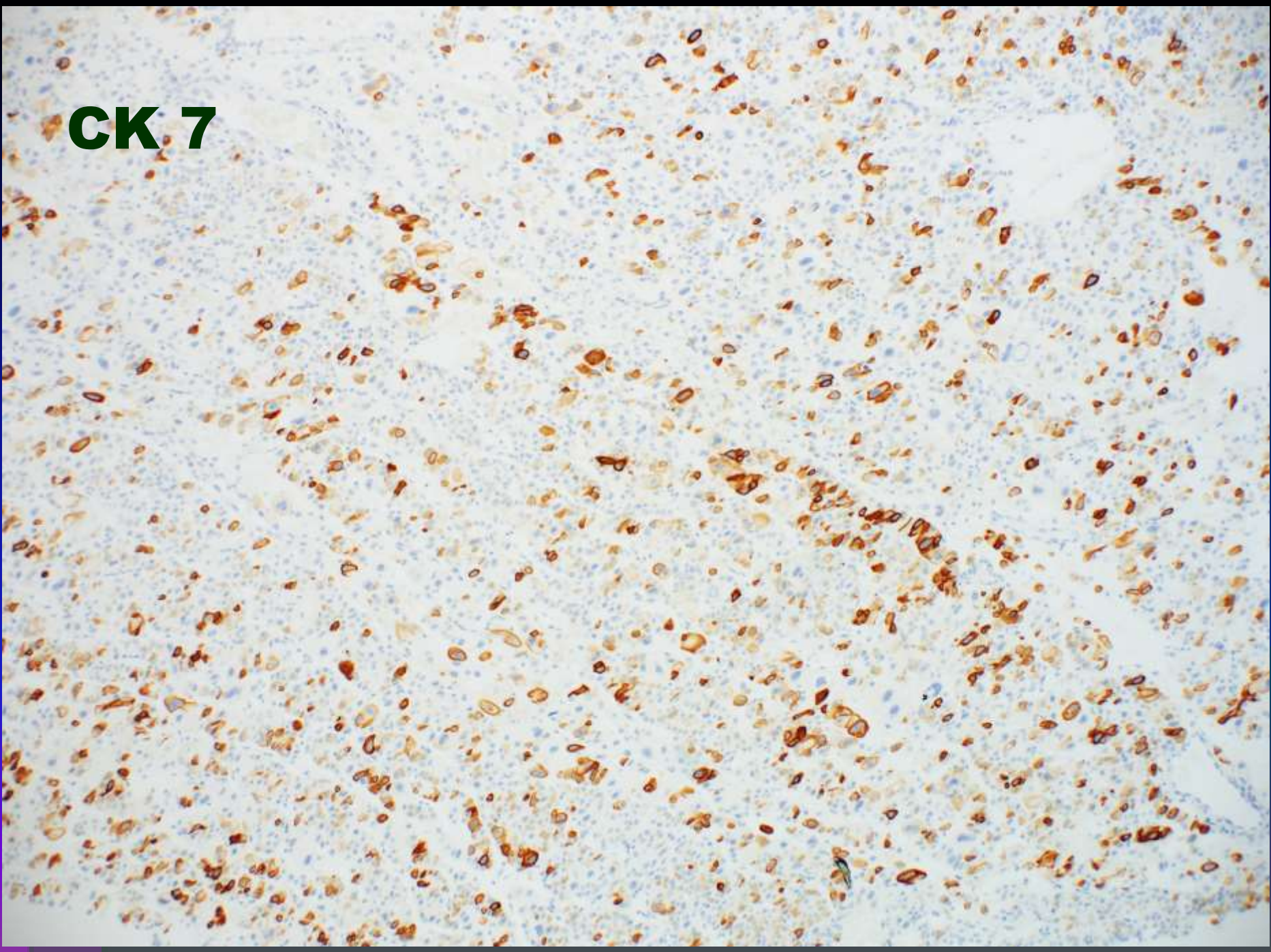
**PAX 8**



**CD117**



**CK 7**



# IHC analýza

	A - uroteliálny	B – RCC chromofóbný
CK7	+	+
HMWCK	+	-
p63	+	-
CK/6	+	-
Vimentin	fok. +	-
CAIX	-	-
RCC	-	-
PAX 8	-	+
CD 117	-	+
Uroplakín	+	-
Thrombomodulín	+	-



**Synchrónny karcinóm z obličkových buniek (chromofóbnny variant) a high grade invazívny uroteliálny karcinóm obličkovej panvičky**

# Diskusia

- zriedkavá nádorová entita, v literatúre je popísaných 50 prípadov, pričom prvá zmienka je datovaná do roku 1921
- predomnancia u žien, v pomere 2:1
- klinická prezentácia nie je odlišná ako pri iných iných solitárnych nádoroch obličiek ( bolesť a hematúria )
- ako najčastejší etiologický agens so podobne ako pri iných uromalignitách údava fajčenie, častejšie bol pozorovaný výskyt u hemodialyzovaných pacientov
- až v 45 % prípadov sa súčasne vyskytovali aj metachrónne karcinómy v dolnom močovom trakte (moč. mechúr)

# Literatúra

- Atilgan D, Uluocak N, Parlaktas BS. Renal cell carcinoma of the kidney with synchronous ipsilateral transitional cell carcinoma of the renal pelvis. *Case Rep Urol.* 2013;2013:194127.
- Qi, N., Chen, Y., Gong, K. *et al.* Concurrent renal cell carcinoma and urothelial carcinoma: long-term follow-up study of 27 cases. *World J Surg Onc* **16**, 16 (2018).
- AMIN, MB. – EBLE, J. – GRINGON, D. – SRIGLEY, J.: Genitourinary pathology, 1st. ed, Wolters Kluwer Health 2013, ISBN 9781469857961
- ZHOU, M. – MAGI-GALLUZI, C. *et al.*: Genitourinary pathology, Elsevier 2015, ISBN 9780323188272.
- ZHOU, M. – NETTO, G. – EPSTEIN, J.I.: Uropathology (1st ed): Saunders 2012, ISBN 9780323249614
- MOCH, H. – HUMPHREY, A. P. – ULBRIGHT, M. T. – REUTER, V. E.: WHO classification of Tumors of the Urinary System and Male Genital Organs (4rd edition): IARC: Lyon 2016, ISBN 978-92-832-2437-2.



**Ďakujem za pozornosť**